

ExChange Autumn Conference 2018

Biographies



Dr Alyson Rees | Cardiff University

Opening Address & Panel Chair

Alyson Rees is an Assistant Director at CASCADE Research Centre and teaches and tutors on the Cardiff University MA in Social Work, with the responsibility for practice learning. Alyson chairs the Practice Assessment Panels for the MA and co-chairs the Equality and Diversity Committee for the School of Social Sciences. She also chairs the Policy Advisory Group for Voices from Care Cymru and is a Board Member of UCAN. Alyson sits on the Editorial Board for the British Journal of Social Work.

Alyson is an experienced practitioner, registered social worker, lecturer and researcher. Her interests are in child and family social work, particularly fostering, adoption, child neglect and video interactive guidance. She also undertakes research in areas of criminal justice, including domestic abuse.



Sally Holland | Children's Commissioner for Wales

Title: Policy Developments in Wales since the publication of the Right Care Report

Sally Holland became Wales' third Children's Commissioner for Wales in April 2015. In her first year in post she undertook a large-scale consultation with children and young people throughout Wales, and used the findings to set her priorities for her first three-year plan. Her priorities include mental health and well-being, effective anti-bullying strategies, reducing inequalities and improving transitions to adulthood for those who have ongoing support and care needs. She is campaigning for equal protection in the law for children from physical assault and hopes to see all public bodies in Wales adopt and implement the United Nations Convention on the Rights of the Child. Sally is a registered social worker with experience in the statutory and voluntary sectors. Prior to taking up the post of Children's Commissioner, she was a Professor at the School of Social Sciences at Cardiff University. During her time at Cardiff University, she founded and became director of CASCADE Children's Social Care Research and Development Centre. Originally from Scotland, Sally has lived in Wales since 1992 and is a keen Welsh learner. Established in 2001, the Children's Commissioner for Wales is the independent human rights institution for children and young people in Wales. The organisation's principal aim is to safeguard and promote the rights and welfare of children and young people.



Professor David Berridge | University of Bristol

Title: *The Future of Residential Care*

David Berridge is Professor of Child and Family Welfare at the School for Policy Studies, University of Bristol, England. He was formerly Research Director at the National Children's Bureau, Research Fellow at the Dartington Social Research Unit and Director of the Institute of Applied Social Research, University of Bedfordshire. David has been a researcher for 30 years and is author/co-author of 12 books and around 100 other chapters and articles. His research specialises particularly on children in public care and living away from home, especially residential care and educational disadvantage. David's latest projects include a major study of the education of children in care and training for residential workers. He teaches on a range of social work and academic courses to help develop research-minded practitioners. He was awarded the OBE in January 2005 for services to children and has acted as children's services advisor to the House of Commons Education Select Committee.



Mike Lewis | Hawliau

Workshop title: *Using systems thinking to improve children's residential care*

Mike qualified as a Social Worker in 1986 following voluntary work with adults with Learning Difficulties. Between 1986 and 1995 he worked in children's services specialising in working with looked after children and in child protection. He has held a number of management posts with Action for Children, Save the Children and Children in Wales. Between 2007 and 2013 he was CEO of the Welsh Refugee Council. He now runs his own consultancy Hawliau which focuses on ethics, values and rights within public services. His work areas include Social Care, Leadership, Migration and Equality /Human Rights. Much of his current work involves the use of Positive Psychology in improving outcomes for service users and within organisations. Mike is a visiting lecturer at the University of Rovaniemi, Finland. He is an associate of Research in Practice, Children in Wales and Voices from Care. In addition to his social work qualification he has a B.Sc. in Psychology, a MA in Social Policy, a MsC in Research Methods and a Postgraduate Certificate in Management. He has



Brian Paget | Consultant

Workshop title: *Good practice guidance in out of area and cross border placements*

Brian is a registered social worker in Wales and England. He has over 25 years' experience in social work and social care spanning the local authority and voluntary sectors and including practice, operational management, service development and quality assurance roles. Since 2004 he has worked as an independent consultant on a range of policy, workforce development and service improvement projects for government departments, sector skills organisations and local authorities. His recent work includes: independent team member for two serious case reviews into sexual exploitation and developing practice guidance for professionals in responding to child sexual exploitation in England; and a range of workforce development projects for Social Care Wales and Qualifications Wales. He is currently developing practice guidance in relation to out of area and cross border placements for children in Wales on behalf of the Task and Finish Group for Residential Care and supporting the Care Inspectorate Wales' National Review of



Florence Lindsey-Walters | SCIE

Workshop title: *A therapeutic toolkit to support residential workers to address the emotional wellbeing and mental health of children in care*

Florence joined SCIE in May 2015, having qualified as a social worker (1:1 BA honours) with extensive experience in children, families and adult's services. Florence has worked on a wide range of projects within the research, information and digital team across adults and children's health and social care. Her most recent work includes defining NHS Digital's adult social care strategy, and managing the Department of Health resource of promising practice across England and Wales in prevention and wellbeing interventions. She is working with Social Care Wales to develop a toolkit to improve the mental health and wellbeing support to their children in care population. Florence has co-authored four papers and is currently supporting CASCADE: Children's Social Care Research and Development Centre, part of Cardiff University to publish research findings in children's subjective wellbeing. She has been both research assistant and lead reviewer on a number of systematic reviews which form the basis of guidelines produced as part of SCIEs work with the National Collaborating Centre for Social Care (NCCSC). These include Intermediate care - including reablement, People's experience in adult social care and Child abuse and neglect. In addition, Florence has developed and facilitated a series of consultations and in-depth interviews with stakeholders and young people, more recently leading on the recruitment panel for the new Chair of the What Works Centre for Children's Social Care. She also has experience in producing policy briefings, scoping searches and evidence reviews as part of her work as a Research Assistant when she first started working at the organisation. Her previous employment includes social work, research and project management for numerous organisations: Catch 22 youth offending team, Hestia domestic abuse services, Public Health England, ECPAT UK – an international children's trafficking charity, Cambridgeshire County Council and the Royal Bank of Scotland



Sean O'Neill | Children in Wales

Panellist: *Our future, our voices: care– experienced vision for residential care*

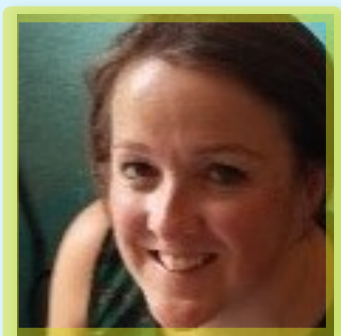
Sean is one of two Policy Directors at Children in Wales responsible for the management and co-ordination Children in Wales' work in specific policy areas. Sean is responsible for work in the fields of child poverty, children's rights, safeguarding, looked after children, advocacy and issues relating to refugees, asylum-seekers and migrating families.



Professor Claire Cameron | University College London

Title: 'Doing Home' in Residential Care

Claire Cameron is Professor of Social Pedagogy at UCL Institute of Education, where she has been researching issues of care, social pedagogy, gender, the children's workforce, looked after children and early childhood education and care since the early 1990s. Currently Deputy Director of the Thomas Coram Research Unit, a specialist social science research unit at UCL IOE and previously a social worker and residential social worker, she has conducted many studies, including cross-national studies, funded by government, European Union and NGOs, of the children's workforce and the quality of life for children in care. She is particularly interested in workforce issues in residential care, having published, with Pat Petrie and others 'Working with Children in Care: European Perspectives' (2006, Open University Press) and run a government funded pilot programme to introduce social pedagogy into residential care in England (2008-2011). She currently leads an impact project to spread social pedagogy into UK children's and adults' services (2016-2019). At the CASCADE conference she will be drawing on several studies to discuss possible directions for residential care in Wales.



Lucy Treby | Social Care Wales

Title: Social Care Wales– Supporting the workforce to deliver good outcomes for children

Lucy Treby is an improvement and development manager for Social Care Wales, leading on children's social care. Lucy began her career in children's service in central London, in 2002 and worked her way up to become a senior social worker. She returned to Wales in 2012 to work as a consultant social worker in an edge of care team. Children who are looked after are a priority for Social Care Wales. They work with partners to support the workforce to deliver the best quality care to the children they look after. A programme of work to support the residential child care sector to continue to do this is underway.

A special thank you to all the care experienced young people who contributed to this event.